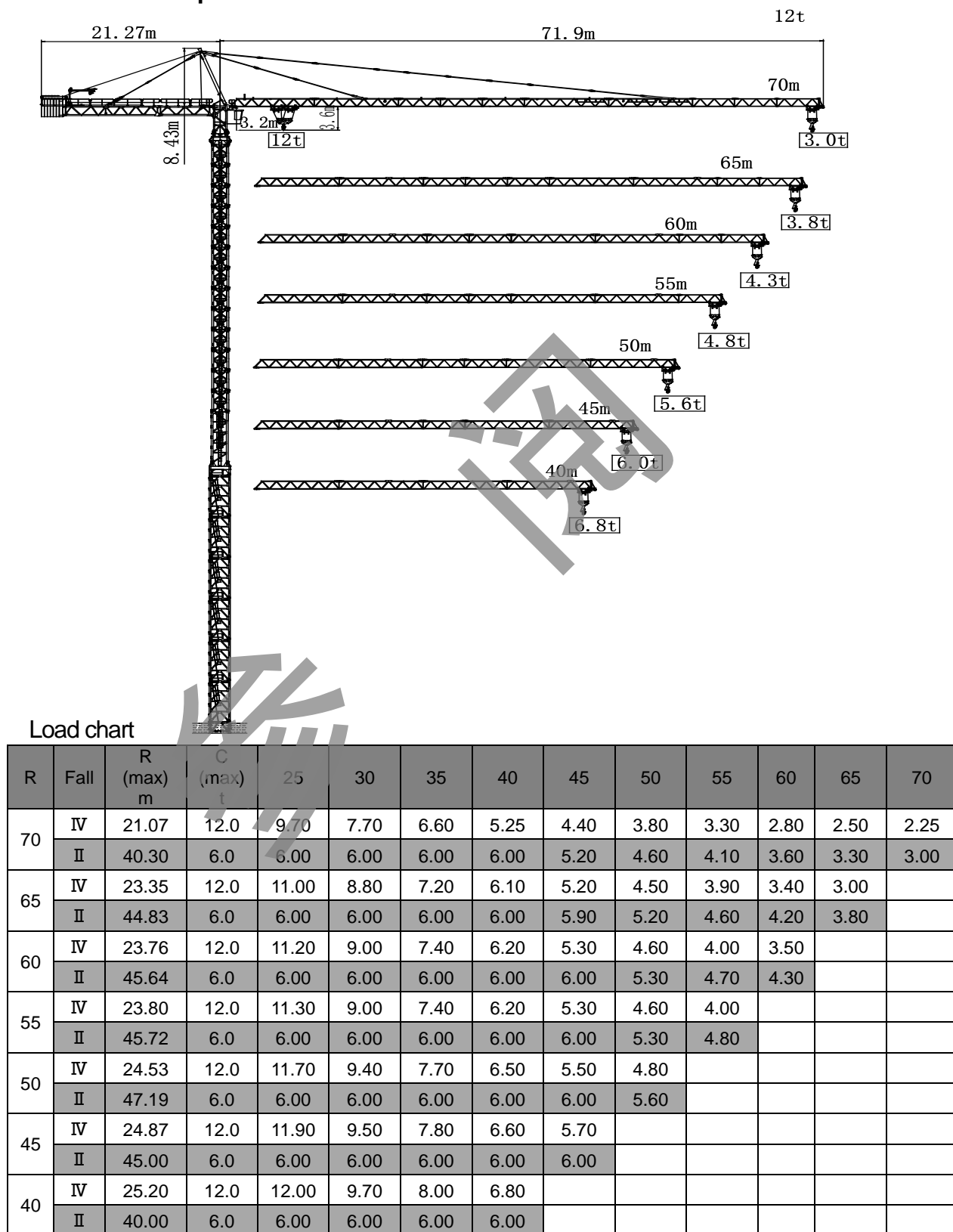
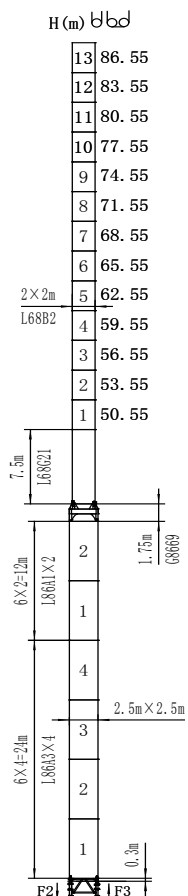


1. Characteristic Parameter

1.1 Characteristic parameter





	●	■
F2	236t	482t
F3	154t	405t
⊗	144t	

● In service ■ Out of service

⊗ Without load . Without ballast with maximum jib and height.

Main Specifications

Items	Mechanism	Speed / Hoist weight				Rope capacity	Motor Kw
		m/min	t	m/min	t		
Hoisting △ ○ ▽	75LFV30	0—60 0—80 0—120	6.0 3.0 1.5	0—30 0—40 0—60	12.0 6.0 3.0	1030m >1030m *	75
Trolleying ◁ □ ▷	5DFV	0→57 m/min					5
Slewing ⦿	7.5RFCV	0—0.8 rpm					2 x 7.5 (2 x 145N.m)
Traveling □ □ □ 4 ○ ▶	RT	12.5—25 m/min					4x5.2

* power supply capacity: 120kVA

* consult with the manufacturer

1.2 Operating environment and working conditions

- Operating ambient temperature: $-20^{\circ}\text{C} \sim +40^{\circ}\text{C}$
- When tower crane is in its maximum installation height, wind speed in service should not be more than 20m/s.
—— Stop the operation when the wind speed $> 20\text{m/s}$; when the wind speed $=20\text{m/s}$, the surface area of load should be less than $1\text{m}^2/\text{t}$, when the wind speed $< 20\text{m/s}$, the surface area of load can be increased, but the wind force subjected cannot exceed 3% of the load.

Use the crane out of service according to following table:

Height above the ground (m)	Calculated wind pressure (P_a)	Wind speed at 10m above the ground (m/s)
0-20	800	36.12
$>20-100$	1100	42.36
>100	1300	46.05

In the event that the crane will be operated in the area possibly with stronger storm, contact us.

During erection, dismantlement and telescoping, wind speed should not be more than 12m/s.

- Tower crane utilization level U4, working level A4, load status Q2
- Voltage supply: $380\text{V} \pm 5\%$, frequency 50Hz
- The safety distance between tower crane's tail and surrounding buildings and construction plant around it should not be less than 0.6m.
- Tower crane foundation ground pressure should be applied to design requirements
- Ground resistance should be less than 4Ω .
- After erection, the perpendicularity tolerance between centre line of tower mast and supporting surface should be less than 4/1000.